

PROLUMEN



LED Downlight

DL178 SERIES

Introduction



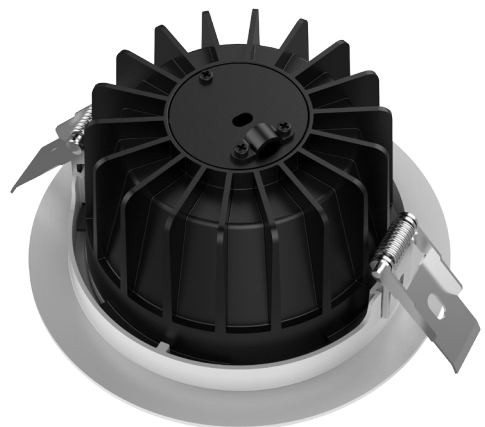
◀ DL178 down light with traditional deep reflector (UGR<19) that provides perfect combination of high lighting efficiency, comfortable lighting and humanization design, without compromising on light performance(color rendering and color uniformity); It offers a wide choice of options for creating the desired ambience.

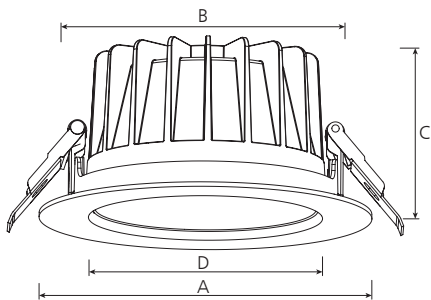
Features

1. High luminous efficiency.
2. 24°, 36°, 60°beam angle optional.
3. Easy installation and maintenance.
4. UGR<19

Application Areas

It is designed for general lighting applications in office, supermarket, shop, school, hotel, etc. It is also widely used for public areas, such as stairway, lobby, reception, corridors etc.





Measurement

Modle	Dimension(mm)				Size(mm)	Product Weight (Kg)		Package weight (Kg)		Carton Size(cm)	Qty/CTN	20GP (pcs)	40HQ (pcs)
	A	B	C	D		N.W/PC	G.W/PC	N.W/CTN	G.W/CTN				
3"-A	95	80	54	63	Ø95*54	0.23	0.31	8.28	12.7	48.5*37*29.5	36	19008	46656
3"-B	110	86	54	69	Ø110*54	0.27	0.35	9.7	14.2	48.5*37*29.5	36	19008	46656
4"	145	120	78	102	Ø145*78	0.475	0.575	8.6	11.8	50*34*38.5	18	7128	14904
6"	172	145	90	127	Ø172*90	0.705	0.84	8.5	11.6	59*40*23.5	12	5940	14400
8"	228	195	99	176	Ø228*99	1.135	1.305	13.6	17.1	52*52*38	12	3240	7860

Technical Data Sheet (1)

Model No.	DL178A-3-10W	DL178B-3-10W	DL178B-3-13W	DL178-4-10W	DL178-4-18W	DL178-4-25W		
Watt(W)	10W		13W	10W	18W	25W		
Dimension(mm)	Ø95*54	Ø110*54		Ø145*78				
Cutout(mm)	Ø82-88	Ø90-95		Ø125-135				
Rated Input Voltage(V)	AC230V							
Input Voltage(V)	AC200-240V							
LED	COB							
SDCM	-							
CCT(K)	1-CCT: 2700K/3000K / 4000K / 5000K							
"Luminous Flux (lm) ±5%	1-CCT	Non-DIM	1050~1120	1050~1120	1000~1300	1050~1150	2070~2250	2550~2750
		DIM	1000~1100	1000~1100	970~1230	1000~1100	2020~2200	2500~2700
CRI	≥ 80							
Beam Angle (°)	24° / 36° / 60°							
UGR	< 19							
LED Driver	Built-out							
DIM	Yes							
CCT Selection Switch	NO							
Protection Class	Class II							
IP Rating	IP20			IP54				
IK Rating	IK06							
Finishing color	Black RAL9005 / White RAL 9016							
Material	PC / Aluminium							
Lifetime (hr)	50,000							
Glow wire test (°C)	850°C							
Operating Temp.(°C)	-20°C ~45°C							
Storage Temp.(°C)	-20°C ~65°C							
Installation	Recessed							
Brand Driver option	Philips, Tridonic, Meanwell							

Technical Data Sheet (2)

Model No.	DL178-6-18W	DL178-6-25W	DL178-6-35W	DL178-8-18W	DL178-8-25W	DL178-8-35W	DL178-8-40W	DL178-8-45W		
Watt(W)	18W	25W	35W	18W	25W	35W	40W	45W		
Dimension(mm)	Ø172*90			Ø228*99						
Cutout(mm)	Ø150-165			Ø200-210						
Rated Input Voltage(V)	AC230V									
Input Voltage(V)	AC200-240V									
LED	COB									
SDCM	-									
CCT(K)	1-CCT: 2700K / 3000K / 4000K / 5000K									
"Luminous Flux (lm) ±5%	1-CCT	Non-DIM	2000~2200	2600~2850	3500~3670	1890~2070	2600~2850	3600~4000	4000~4200	4250~4700
		DIM	1980~2160	2500~2750	3320~3500	1800~1980	2500~2750	3500~3900	3800~4000	4200~4500
CRI	≥80									
Beam Angle (°)	24° / 36° / 60°									
UGR	<19									
LED Driver	Built-out									
DIM	Yes									
CCT Selection Switch	NO									
Protection Class	Class II									
IP Rating	IP54									
IK Rating	IK06									
Finishing color	Black RAL9005 / White RAL 9016									
Material	PC / Aluminium									
Lifetime (hr)	50,000									
Glow wire test (°C)	850°C									
Operating Temp.(°C)	-20°C ~45°C									
Storage Temp.(°C)	-20°C ~65°C									
Installation	Recessed									
Brand Driver option	Philips, Tridonic, Meanwell									

Driver Datasheet (Non-Dimmable)

Power	10W	13W	18W	25W	35W	40W	45W
Rated Input Voltage(V)	AC230V						
Frequency	50/60Hz						
Input Voltage	AC200-240V						
Efficiency	≥79%	≥78%	≥82%	≥83%	≥84%	≥84%	≥84%
Total load wattage	10W±1W	13W±1W	18W±1W	25W±5%	35W±5%	40W±5%	45W±5%
Power Factor	0.9						
Rated Input Current	≤0.05A	≤0.07A	≤0.11A	≤0.13A	≤0.18A	≤0.21A	≤0.23A
Full load output voltage	DC28-40V	DC28-40V	DC28-40V	DC28-40V	DC28-40V	DC28-40V	DC28-40V
Rated output current	230mA	300mA	460mA	600mA	850mA	950mA	1050mA
Output current range	230mA±5%	300mA±5%	460mA±5%	600mA±5%	850mA±5%	950mA±5%	1050mA±5%
Power tolerance	±5%						
Current output tolerance	±5%						
Short circuit protection	PASS						
Over voltage protection	PASS						
Over temperature protection	PASS						
THD	<20% @ 230V						
Surge	500V			1KV			
Withstand voltage	AC3750						

Driver Datasheet (Triac Dimmable)

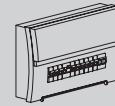
Power	10W	13W	18W	25W	35W	40W	45W
Rated Input Voltage(V)	AC230V						
Frequency	50Hz						
Input Voltage	AC200-240V						
Power Factor	0.9						
Efficiency	82%	82%	85%	85%	85%	85%	85%
Total load wattage	10W±1W	13W±1W	18W±1W	25W±5%	35W±5%	40W±5%	45W±5%
Rated Input Current	≤0.06A	≤0.08A	≤0.1A	≤0.14A	≤0.2A	≤0.23A	≤0.24A
Full load output voltage	DC23-40V	DC23-40V	DC23-40V	DC23-40V	DC23-40V	DC23-40V	DC23-40V
Rated output current	230mA	280mA	430mA	600mA	800mA	950mA	1050mA
Output current range	230mA±5%	280mA±5%	430mA±5%	600mA±5%	800mA±5%	950mA±5%	1050mA±5%
Power tolerance	±5%						
Current output tolerance	±5%						
Dimming Range	8%-100%						
Short circuit protection	PASS						
Over voltage protection	PASS						
Over temperature protection	PASS						
THD	<20% @ 230V						
Surge	500V			1KV			
Withstand voltage	AC3750V						

Note: DALI & 0-10V driver specification, please refer to individual driver datasheet.

Installation Procedure

WARNING

1. Switch off before installation.
2. Switch on only after complete installation and examination of the circuit.
3. Professional electrician for installation and maintenance only.

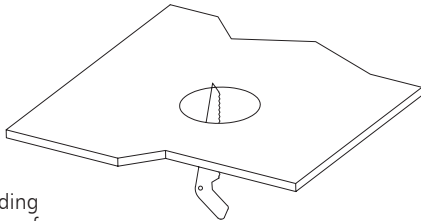


**Turn Off
Power Supply**

Turn Off power supply before starting any installation. Read instructions & check you have all the tools & accessories to complete the installation correctly.

■ Installation

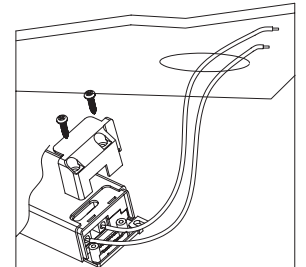
Step 1



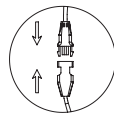
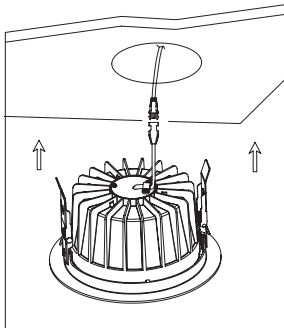
Open a hole according to the cutout size of led downlight.

Step 2

Use screw-driver to open the driver terminal cover, feed the main AC wire L. N. in terminal block respectively, then fix the cover back.

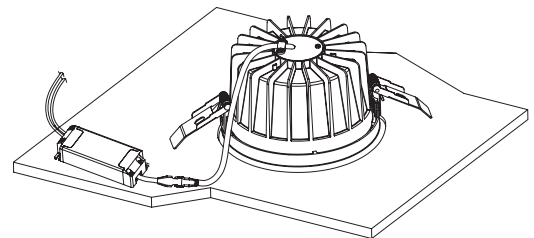


Step 3



3. Connect the downlight with driver, hold back the spring clips then push the downlight into the hole.

Step 4



Connect the downlight with driver, hold back the spring clip then push the downlight into the hole.